



Cass County 4-H News

Fair Edition 2009

University of Illinois Extension, Cass-Schuyler Unit

Register to be a Home Economics building volunteer today!!
Parents, Grandparents, Friends, Family, YOUTH, all are welcome to help!
Assistance is needed on MONDAY, July 13 as assistants and judge's helpers.
If you are interested, please call and let the office know at 452-3211.
Thanks for your help!

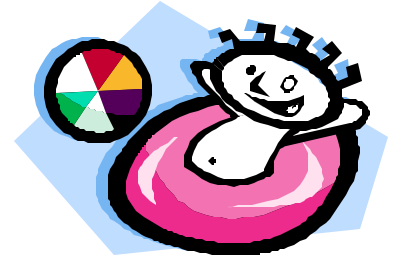
**4-H and JUNIOR ENTRIES
WILL BE TAKEN
JUNE 22 and 23 from 4-8pm
in Virginia at the Extension Building.**

**ORIGINAL COPIES
of the Cass County Fair Flyer
WILL NOT
be in the Star Gazette Shopper this year!**
You can pick up a flyer at local banks, gas stations,
businesses, or the Extension Office.
The Junior Fair Flyer is also available on our
website at www.extension.uiuc.edu/cass

Date:
August 2-4

Federation Trip to Bass River Resorts

Active Federation Members are reminded to mark their calendars and watch the mail for registration packets for the 2009 Canoe trip!



Reservation deadline: July 21



CLOVERBUD CHECK-IN INFORMATION

All Cass County Cloverbuds who are exhibiting in the fair will be checking in their items at 9am on Monday, July 13. Check-in will be held next to the stage area by the large tree (in the shade). Youth will then participate in Cloverbud Circle Time to show everyone what they have made! We ask that you then place your project in the 4-H building for display the remainder of the week. All cloverbuds will receive a special participation award.

2009 4-H Royalty Contest



Registration forms available at our website,
www.extension.uiuc.edu/cass

All forms must be turned in no later than June 20.
Voting will occur during Entries and the first day of the fair.
ANY Boy or Girl age 14 or older may participate.

THERE IS A BIG DIFFERENCE BETWEEN 4-H SHOW AND JR. SHOW!

Please be sure that you understand the difference between 4-H and Junior Show! 4-H Show is when you are judged by conference judging (see conference judging page in this newsletter) and YOU MUST BE PRESENT!! Junior Show is competitive, with an entry fee, and you do not have to be present in the Home Ec. Department! If you have questions about this, please call and we will thoroughly explain.

THINGS TO REMEMBER

- All articles of an exhibit must have an exhibit tag filled out properly and attached to all projects (we will get these to you)
- NO entries will be released from the 4-H building until noon on Friday, July 17, but must be picked up before 4:00pm so that the building can close for the year. Items will NOT be secure after 4pm if prior arrangements have not been made with Extension Staff.
- All non-livestock 4-H exhibits will be conference judged.
- **4-H members must be present for conference judging in order to be selected for the State Fair. This will be strictly enforced this year.**

PLEASE CHECK YOUR 4-H REQUIREMENT BOOK
FOR MORE 4-H RULES AND GUIDELINES.
Everything is explained in the Requirement Book
for 4-H Judging Rules,
including individual Project Requirements!!!

Do you have what it takes to be a
4-H Cool Kid?



During the 2009 Cass County Fair, 4-Her's will get the chance to be nominated by fellow 4-Her's, leaders, and parents if they are caught displaying sportsmanship, such as helping others, good attitude, being respectful or another outstanding quality during the fair.

Winners will receive a special 4-H Gift from the Extension Office. To nominate a cool kid, go to the office during the fair and fill out a nomination form.

2009 Cass County Fair
Special Events Soda Stand Schedule

Cass County IDOL

Friday July 17

Open: 5:30pm-7pm	7pm-8:30pm	8:30pm-close
River Valley	Circleville	Ashland 4-H
Virginia Ag		Philadelphia

Demo Derby Saturday July 18

Open: 5:30pm-7pm	7pm-8:30pm	8:30pm-close
Clover Clan	Union Corner	Indian Creek
	Lucky Charms	

Each shift must have **a minimum** of 1 adult and 3 kids.
 Where there is more than one club scheduled for a shift,
 leaders must work together to plan the schedule.

QUALITY ASSURANCE AND ETHICS WEB TRAINING

4-Hers who plan to exhibit livestock at the Illinois State Fair are required to take a **ONE TIME** online training in Quality Assurance and Ethics (QAEC) in order to exhibit. If you have previously taken this ONLINE training you do not have to take it again. Horse, Beef, Swine, Sheep, and Dairy exhibitors must take this training.

The weblink for the training is as follows:

<http://web.aces.uiuc.edu/qaec/>

Illinois State Fair Jr. Department Livestock Entries

Deadline to enter is June 26 no later than 4:30pm (excluding Horses) . If they are not in by 4:30pm on the 26th, they will not be entered.

THERE WILL BE ENTRY FEES
for this department.

***REVISED* STATE FAIR
ADMISSION TICKETS AND PARKING PASSES**

All tickets and Daily parking passes MUST be ordered and PAID FOR in ADVANCE in 2009. Passes will be ordered JULY 7.

We will not be ordering any more after this date.

Admission Tickets are \$1.00 each (age 5-12) and
\$2.00 each (age 13 and over)

Daily Lot 1 Parking passes are \$4.00 each.

Please fill out the form below and return it to us
no later than July 7.

ABSOLUTELY NO EXCEPTIONS

All 4-Her's can order.

Checks should be made out to **ILLINOIS DEPT. OF AGRICULTURE**

Cash may be paid in person or return form and check to:

Cass County Extension

651 South Job, Virginia IL 62691

Or

Schuyler County Extension

710 Maple Ave., Rushville IL 62681

Name: _____

Number of Admission Tickets: _____ \$1.00 each (age 5-12)
_____ \$2.00 each (age 13 and over)

PARKING PASSES: (Fill in number needed next to date)

\$4.00 EACH

8/14 _____ 8/15 _____ 8/16 _____ 8/17 _____ 8/18 _____

8/19 _____ 8/20 _____ 8/21 _____ 8/22 _____ 8/23 _____

Grand Total: \$ _____

Cass County Fair Schedule

Monday, July 13

- 8-9:30am: 4-H and Jr. Home Economics
Check In
- 9am: Dog Obedience Show (Showring);
Cloverbud Circletime (Stage)
- 10:15am: 4-H Conference Judging (by club)
River Valley- 10:15am
Lucky Charms- 10:30am
Clover Clan- 10:45am
Indian Creek- 11:15am
Ashland 4-H and Circleville- 11:30am
Union Corner- 11:45am
Virginia Ag- 12 Noon
Philadelphia- 12 Noon
- Jr. Home Economics Judging resumes after
lunch

Tuesday, July 14

- 7am: All breeding swine, sheep and
goats to be in place
- 8am: Horse Show Registration;
Weigh Sheep;
Poultry Exhibits to be in place
- 8:30am: Weigh breeding swine
- 9am: Poultry Show
All Cattle to be in place
- 9:30am: 4-H/Jr. Horse Show, followed by
Open Youth horse Show
- 10am: Weigh Steers
- 10am: Sheep Breeding Show, followed
by Wethers and Goats
- 5-8pm: Market Pen and Fryer Rabbits in
place
- 6:30pm: Little Miss Cass County Fair
Contest
- 8pm: Cass County Fair Queen Contest
and crowning of Cass 4-H Roy
alty

Wednesday, July 15

- 7:30am: All other Rabbits in place
- 8am: Rabbit Show;
Breeding Swine Show
- 2pm: Livestock Judging Contest
(follows Swine Show)
- 6pm: Pedal Pull, followed by Pool
Party *FREE*
- 9 pm: Family Movie Night *FREE*
“Bedtime Stories” Rated PG

Thursday, July 16

- 7am: All Market Swine to be in place
Scan sheep and steers for Carcass
Class
- 7:30am: Weigh market Swine
- 10am: Beef Breeding Show, followed by
Steer Show
- 6pm: Kids Games (Greased Pigs/Bale
Bucking/Tug of War)

Friday, July 17

- 8am: Swine Showmanship Contests,
followed by Market Swine and
Barrow Show
- Noon: Projects released from Home
Economics Building
- 6pm: Cass County Idol Contest
Overnight Camp Out

Saturday July 18

- 9:30am: Livestock Plaque Presentation
- 10am: Sale of 4-H Livestock
- 11am: Livestock Buyers Appreciation
Dinner
- 7pm: Demolition Derby (admission
charged)

OPEN YOUTH HORSE SHOW

JULY 14, 2009

Co-Sponsored By: Heartland Saddle Club

Cass Co. Fairgrounds, Virginia, IL

From Rt. 78 in Virginia, turn West onto Illini St. – go 2 blocks, turn right for ½ block, then turn left and go straight
(horse show arena is behind athletic field)

START TIME: 1:00 PM or 1 Hour After 4-H/JR Horse Show Ends (Separate Show Bill)

ENTRY FEES: \$3.00 / class * 75% Payback 1st – 3rd * Ribbons 1st – 5th

EXHIBITOR AGES: As of JAN. 1, 2009

CLASSES:

1. HALTER – 10 yrs. & under
2. HALTER – 11 – 18 yrs.
15 Minute Break
3. LEADLINE – 8 yrs. & under (rider cannot enter any other classes)
4. WALK-TROT PLEASURE – 10 yrs. & under – optional tack
5. WALK-TROT PLEASURE – 11 – 18 yrs. – optional tack
6. TRAIL, WALK-TROT - 10 yrs. & under – optional tack
7. TRAIL - 11 – 18 yrs. - optional tack
8. ENGLISH COUNTRY PLEASURE – walk & favorite gait – 18 yrs. & under
9. WESTERN PLEASURE – 12 yrs & under
10. WESTERN PLEASURE - 13 – 18 yrs.
15 MINUTE BREAK
11. TROT POLES - 10 yrs. & under – (rider cannot enter classes 13, 16, 19)
12. POLES - 11 – 13 yrs. – (rider cannot enter classes 13, 16, 19)
13. POLES - 18 yrs. & under – (rider cannot enter classes 11, 12, 14, 15, 17, 18)
14. TROT BARRELS - 10 yrs. & under – (rider cannot enter classes 13, 16, 19)
15. BARRELS - 11 – 13 yrs. – (rider cannot enter classes 13, 16, 19)
16. BARRELS - 18 yrs. & under – (rider cannot enter classes 11, 12, 14, 15, 17, 18)
17. TROT FLAGS - 10 yrs. & under – (rider cannot enter classes 13, 16, 19)
18. FLAGS - 11 – 13 yrs. – (rider cannot enter classes 13, 16, 19)
19. FLAGS - 18 yrs. & under – (rider cannot enter classes 11, 12, 14, 15, 17, 18)

**CURRENT NEGATIVE COGGINS PAPERS REQUIRED BY LAW * ALL OUT OF STATE HORSES MUST HAVE
CURRENT 30 DAY HEALTH PAPERS * AN ADULT MUST BE PRESENT WITH YOUTH EXHIBITORS *
NO STALLIONS * ALL EQUINE MUST BE UNDER CONTROL AT ALL TIMES * ALL DOGS MUST BE ON
LEASHES AT ALL TIMES * PROPER SHOW ATTIRE * HELMETS RECOMMENDED IN ALL CLASSES * NO ALCO-
HOL * NO VULGAR OR ABUSIVE LANGUAGE * NO ABUSIVE TREATMENT TO EQUINE * NO REFUNDS UNLESS
CLASS IS CANCELLED OR HORSE / RIDER IS INJURED * NOTIFY ANNOUNCER OF TACK CHANGES * SHOW
COMMITTEE HAS THE RIGHT TO ALTER ANY OR ALL CLASSES IN THE BEST INTEREST OF THE SHOW *
GOOD SPORTSMANSHIP IS APPRECIATED AT ALL TIMES
JUDGES DECISIONS ARE FINAL**

THANK YOU!

**Concessions on Grounds * Heartland Saddle Club Members & Cass Co. Fair Board Members Are Not Responsible For Acci-
dents, Injuries, Or Thefts.**

For More Information Call: Connie 217-997-2150 or Kay 217-320-1079

For More Horse Show Dates & Information Visit: <http://home.earthlink.net/~heartlandsaddleclub/>

Cass 4-H Back to School Supply Drive



UNIVERSITY OF ILLINOIS
EXTENSION

College of Agricultural, Consumer and Environmental Sciences



Beginning **NOW**, clubs will compete in a school supply scavenger hunt of *newly purchased school supplies* to gain the highest number of points. Clubs will earn points by collecting much needed school supply items. **Bolded items** are needed in higher quantities. Items may either be brought to your club leader, or to the Extension Office. **NOTE TO LEADERS:** You will need to bring items to the office so we can record the points. We will keep school supplies sorted by club so that points can be tracked. **FINAL DROP OFF DATE** is July 17, 2009.

Winning clubs will be announced at the Livestock Auction on Saturday July 19 at the Cass County Fair.

Supplies will be
going **ON SALE**
now at local de-
partment stores!

PRIZES:

1st Place: (must have over 1000 points) **\$75**

2nd Place: (must have over 750 points) **\$50**

3rd Place: (must have over 500 points) **\$25**

Awards sponsored by Cass County 4-H Federation

Point system:

Facial Tissues - 15 points/box

Paper Towels - 15 points/3-pack

Pencils #2 Lead - 10 points/box

Quart, Gallon, & Sandwich Ziploc Bags - 10 points/box

(Pencil) Box for Art Supplies - 15 points/each

3 Ring Binders - 10 points/each

Scissors, rounded and pointed - 10 points/each

Glue, 8oz & Large - 10 points/each

Water Colors (8 color pack) - 10 points/each

Calculator - 15 points/each

Erasers, Pink - 5 points/each

Highlighters - 5 points/each

Erasable Ballpoint Pens - 5 points/each

Glue Sticks - 5 points/each

Ballpoint Pens - 5 points/each

Pencil Pouch - 5 points/each

Backpacks - All sizes and styles - 30 points/each

Crayons:

8 Large - 5 points/box

No. 8 - 10 points/box

No. 16 - 10 points/box

No. 24 - 10 points/box

Markers (Washable):

Large, Classic Colors - 15 points/box

Large, Tropical or Bold Colors - 5 points/box

Wide Ruled Paper:

8 1/2" Ruled, Center Dash Line - 10 points/each

70 page spiral notebooks - 10 points/each

Loose Leaf Notebook - 10 points/pack

2 pocket folders - 5 points/each

(solid colors, with AND without brads)

12" Metric and inch ruler - 5 points/each

GOOD LUCK 4-Her's!



Items donated will be distributed to area schools to be given to children who are in need of school supplies.

ALL ITEMS will benefit Cass County Schools.



Cass Fair Newsletter!

Non-Profit Org.
U.S. Postage
PAID
Permit #48
Virginia IL 62691

University of Illinois Extension
Cass County Office
651 South Job
Virginia, IL 62691

University of Illinois Extension

Cass -Schuyler Unit
651 South Job
Virginia IL 62691
Fax: 217-452-7260
Phone: 217-452-3211

Check out our new website!
www.extension.uiuc.edu/cass



UNIVERSITY OF ILLINOIS
EXTENSION

College of Agricultural, Consumer and Environmental Sciences



University of Illinois at Urbana-Champaign
College of Agriculture, Consumer and Environmental Sciences
United States Department of Agriculture
■ Local Extension Councils Cooperating
*University of Illinois Extension provides equal
opportunities in programs and employment*

Cass County Staff

Jodie Tate, County Director

jotate@illinois.edu

Cindy L. Swartz, 4-H Community Worker

swartzc@illinois.edu

Janet Detrick, Family Nutrition Program Assistant

detrick@illinois.edu

Beth Vandenberg, Office Support Associate

bvandenb@illinois.edu