

Illinois ATV Related Injuries/Fatalities Statistics

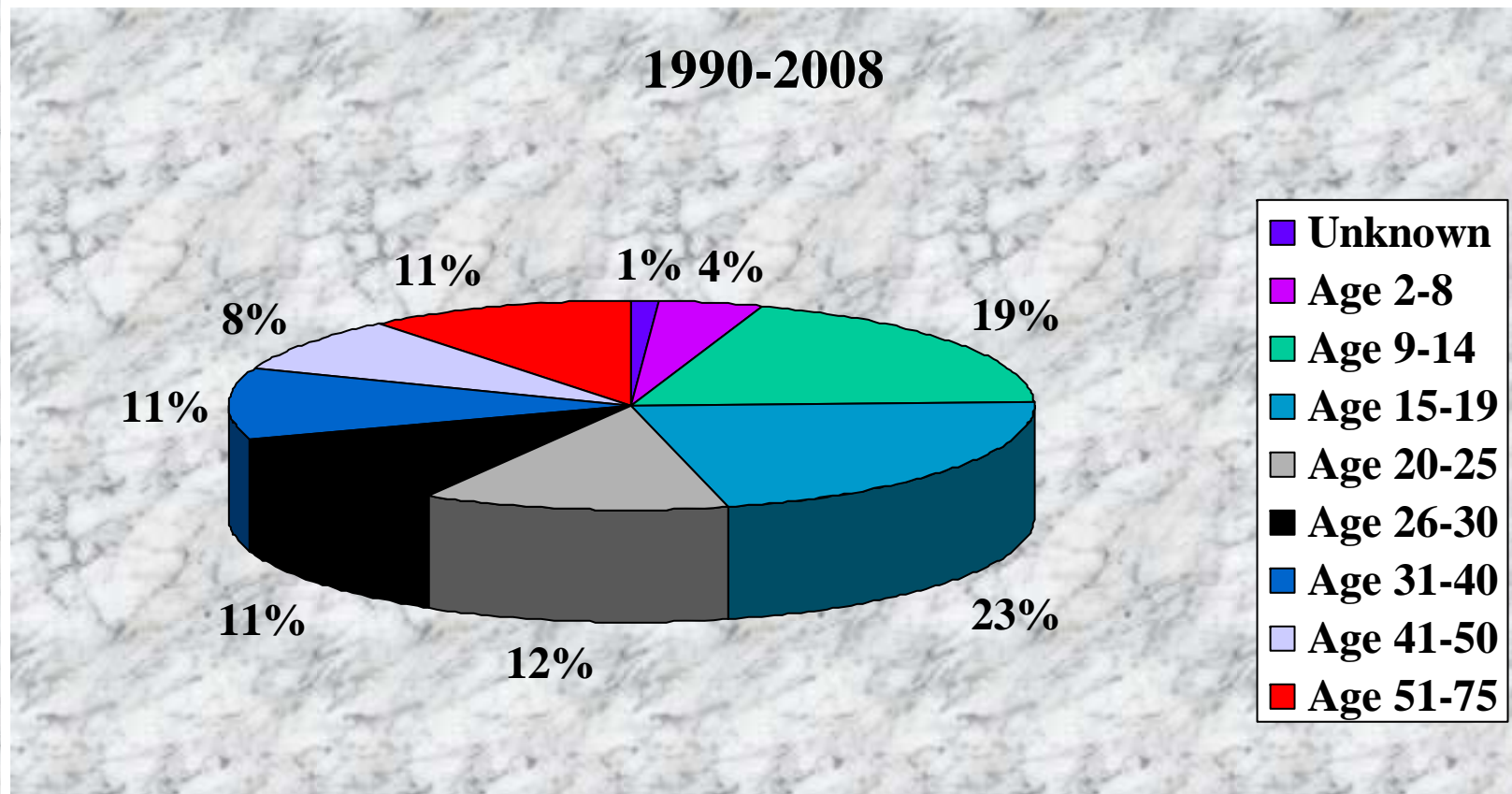


1990-2008

Data

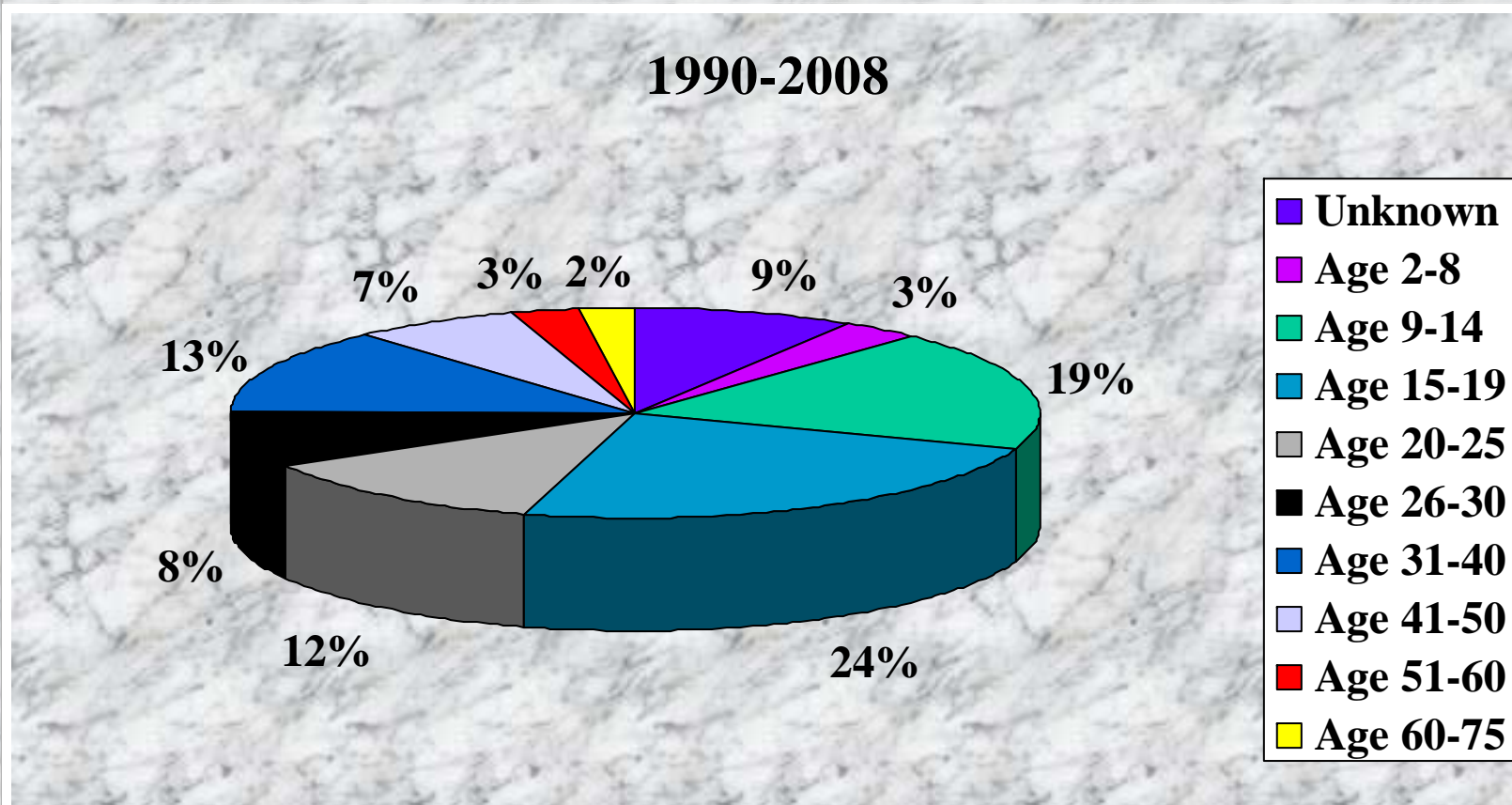
All data compiled is from press clippings provided by the Illinois Press Association. Based on research in other states, the use of press clippings is estimated to provide between 60-80% of the actual number of incidents that occurred in Illinois in the years covered.

Fatalities - Age



Fatality Total=204

Injuries/Fatalities - Age



Injury/Fatality Total=614

Injuries/Fatalities – County Location

- Adams (13)
- Clark (5)
- Clay (14)
- Clinton (15)
- Cook (7)
- Crawford (6)
- Cumberland (5)
- Edgar (6)
- Effingham (9)
- Fayette (8)
- Franklin (31)
- Grundy (6)
- Hancock (11)
- Henry (5)
- Iroquois (7)
- Jackson (12)
- Jasper (9)
- Jefferson (7)
- Jo Daviess (19)
- Kane (11)
- Kankakee (11)
- Kendall (5)
- Lake (7)
- LaSalle (14)
- Lawrence (13)
- Livingston (6)
- Macoupin (10)
- Marion (9)
- Montgomery (8)
- Ogle (22)
- Peoria (13)
- Perry (13)
- Pike (12)
- Saint Clair (8)
- Saline (10)
- Sangamon (6)
- Stephenson (11)
- Tazewell (5)
- Union (6)
- Wabash (4)
- Warren (5)
- Wayne (8)
- White (19)
- Whiteside (12)
- Will (21)

1990-2008

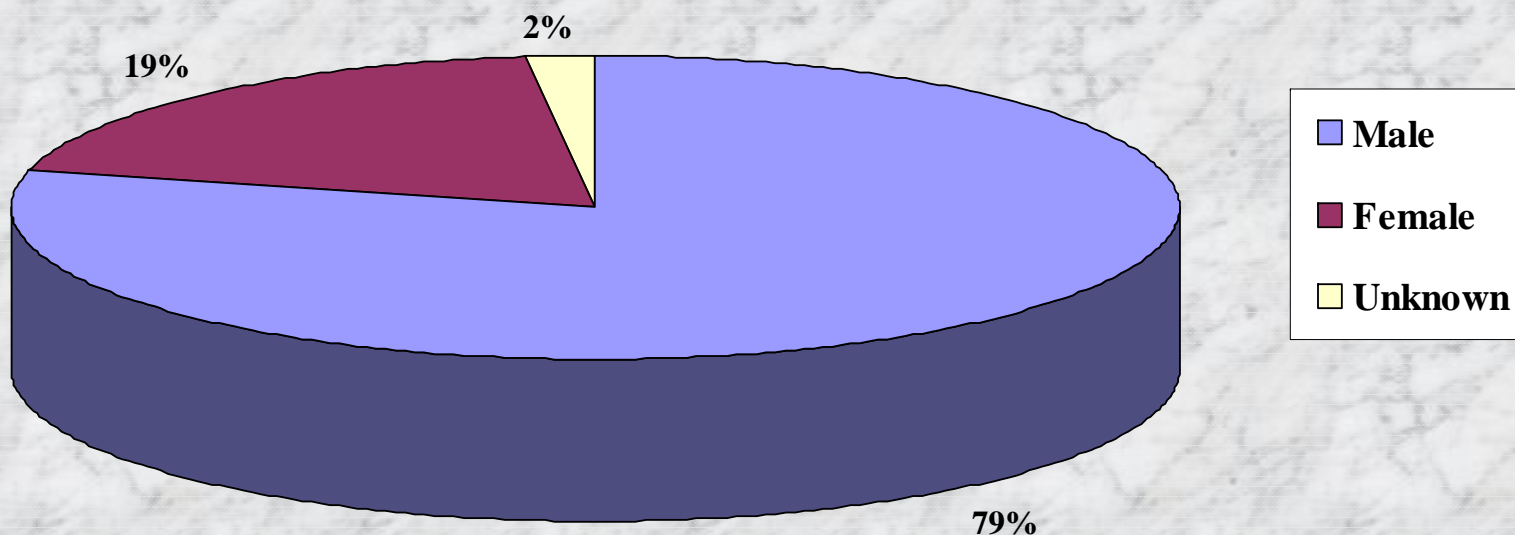
Fatalities - County Location

- Adams (3)
- Carroll (4)
- Clark (3)
- Clinton (7)
- Cook (5)
- Cumberland (3)
- Effingham (5)
- Franklin (6)
- Iroquois (2)
- Jo Daviess (2)
- Kane (9)
- Kankakee (4)
- Kendall (5)
- Livingston (2)
- Montgomery (2)
- Ogle (3)
- Pike (4)
- Randolph (2)
- Stephenson (2)
- Union (3)
- White (2)
- Whiteside (3)
- Will (8)

1990-2008

Injuries/Fatalities By Sex Category

1990-2008



Injury/Fatality Total=656

Fatalities By Sex Category

Female

3

Male

11

0

2

4

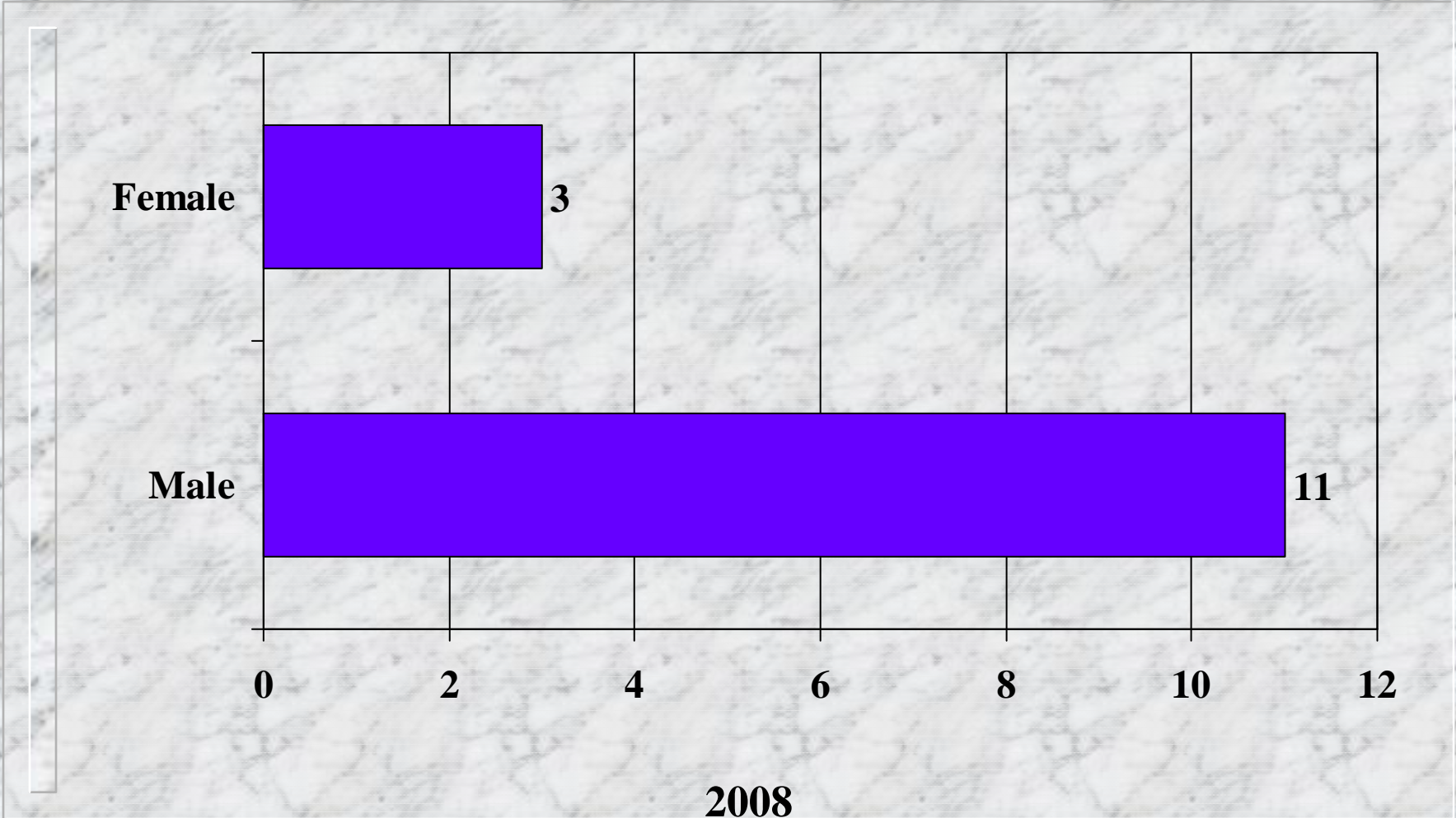
6

8

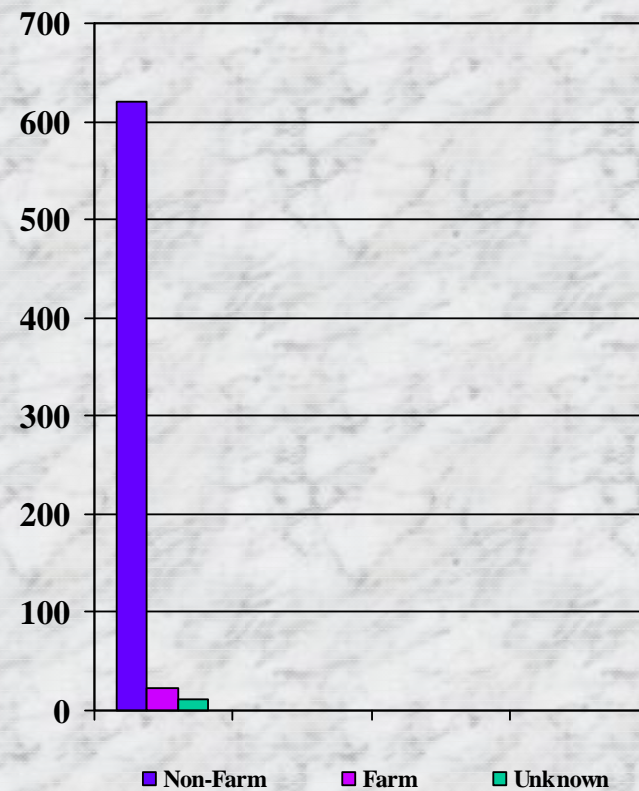
10

12

2008

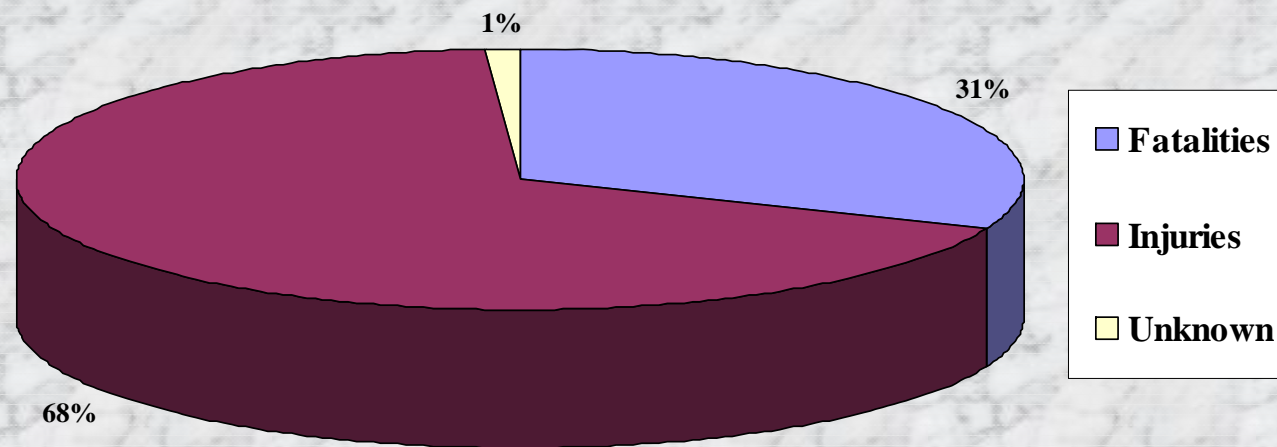


Injuries/Fatalities - Farm Vs. Non-Farm Application



Injury/Fatality Total=656

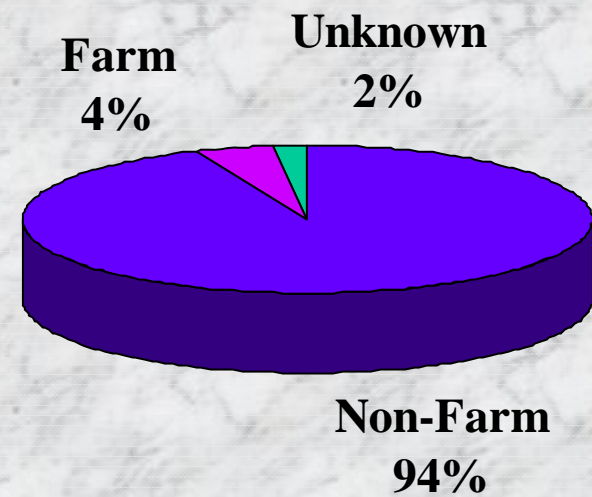
Injuries Vs. Fatalities



1990-2008

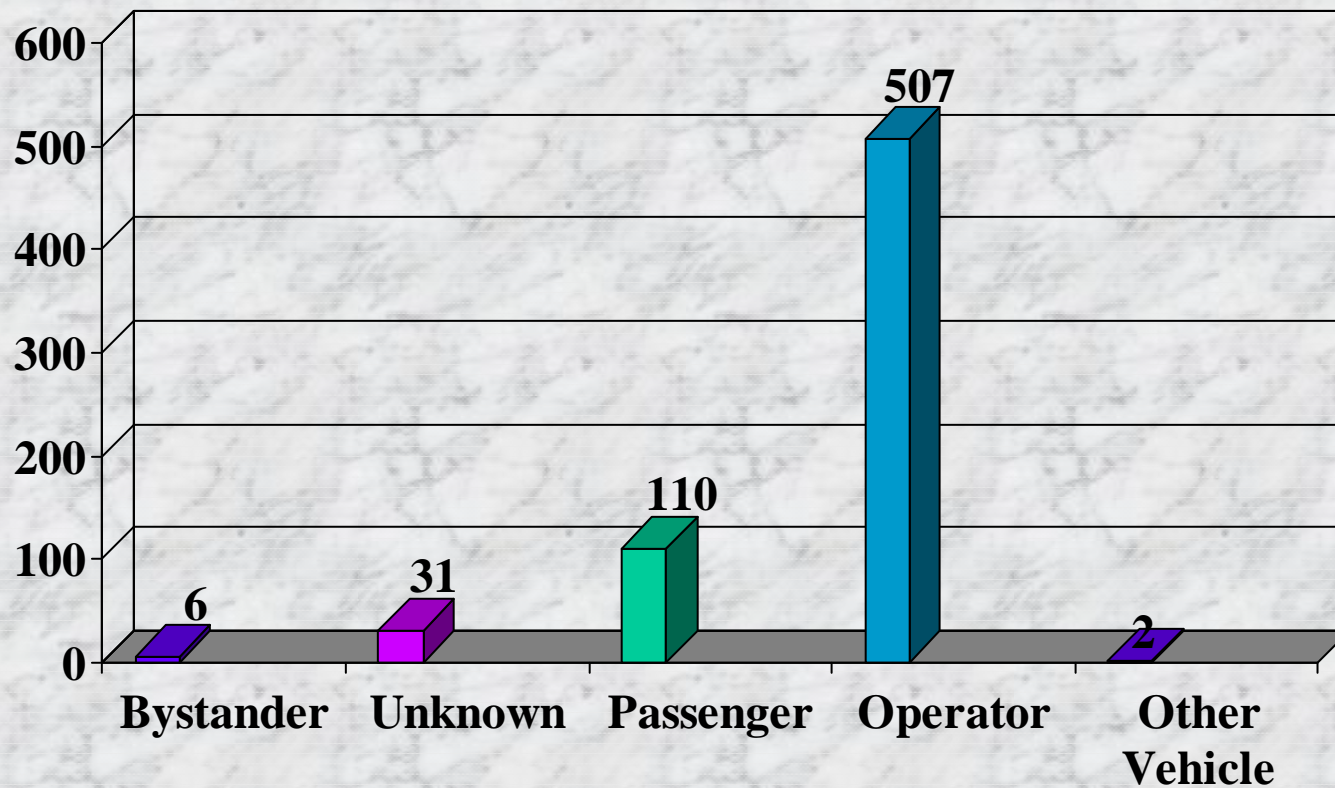
Injury/Fatality Total=656

Fatality - Location

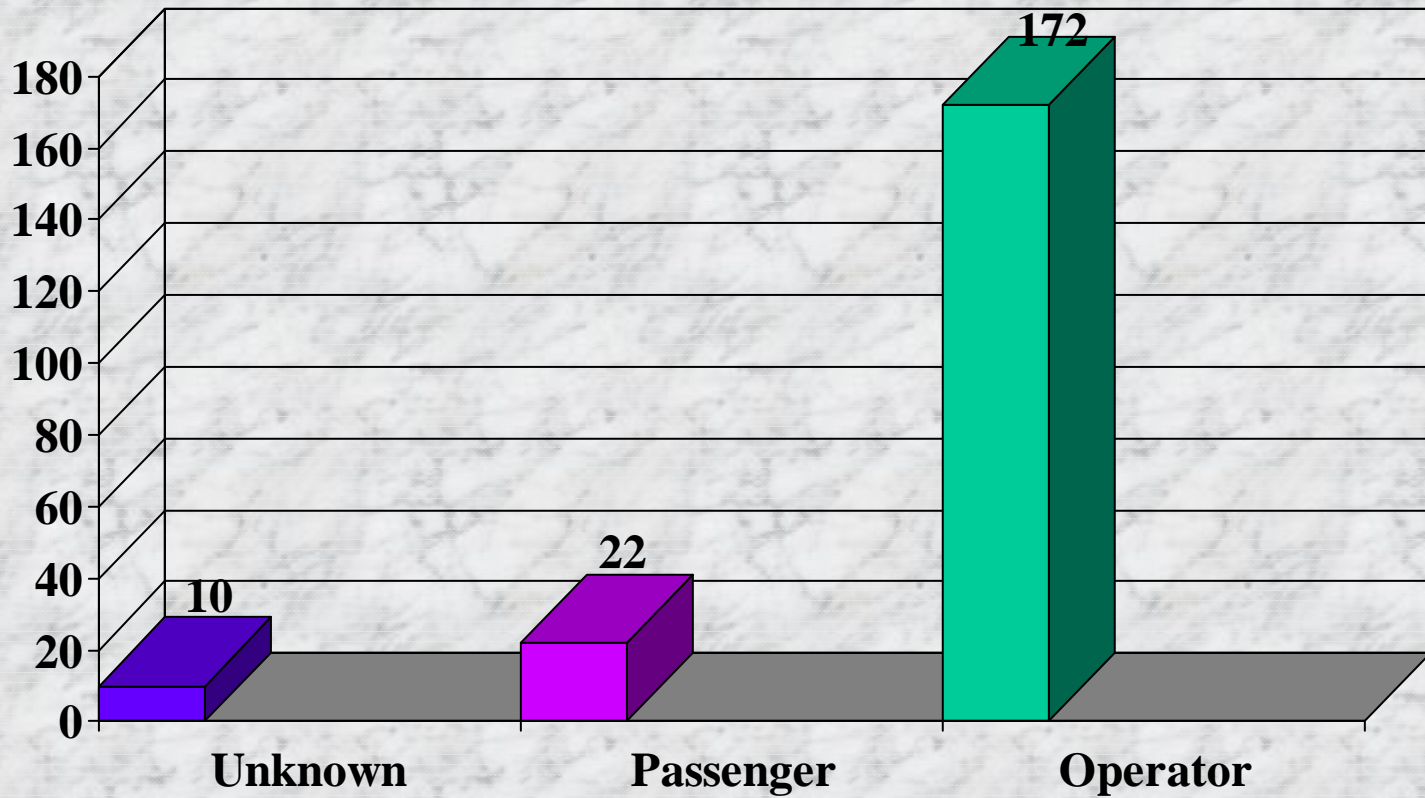


Fatality Total=204

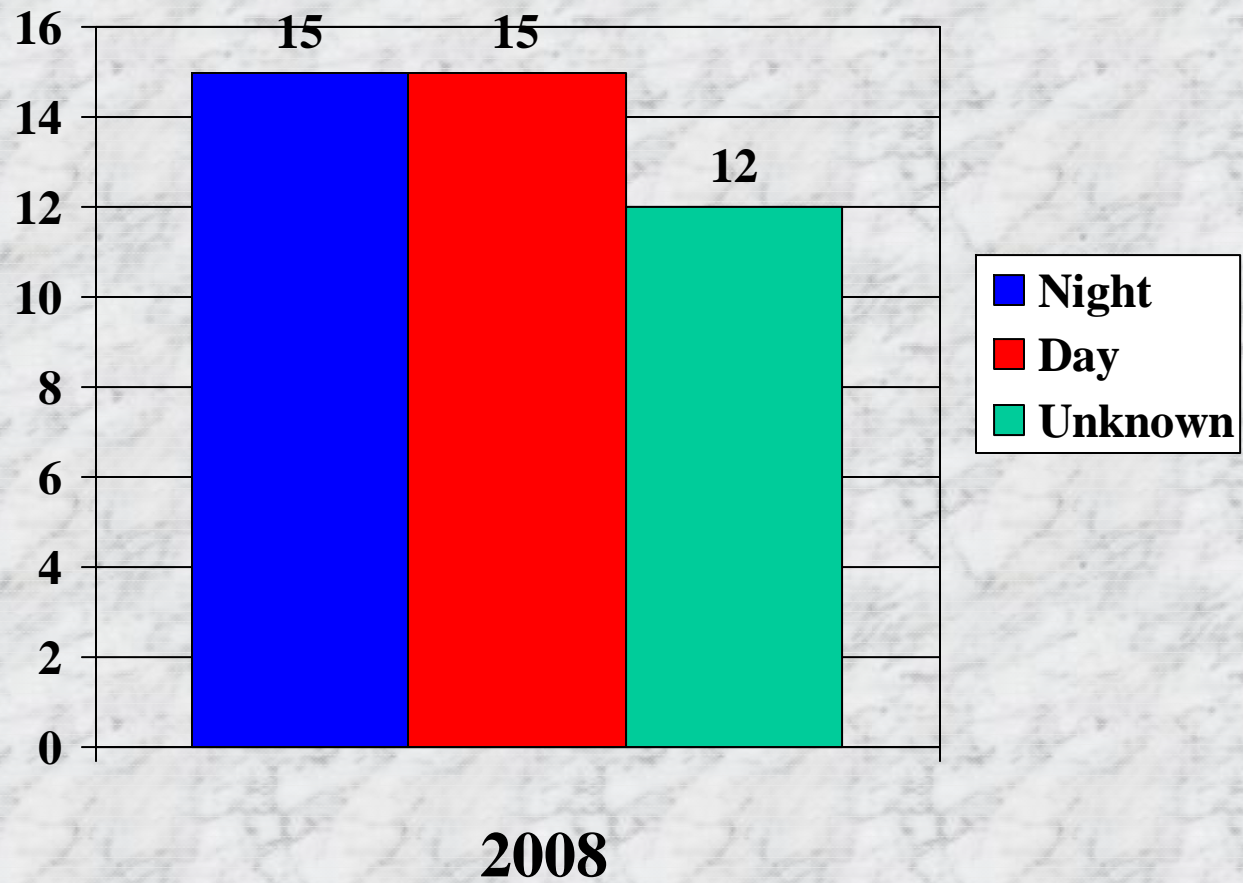
Injury/Fatality - Occurred To



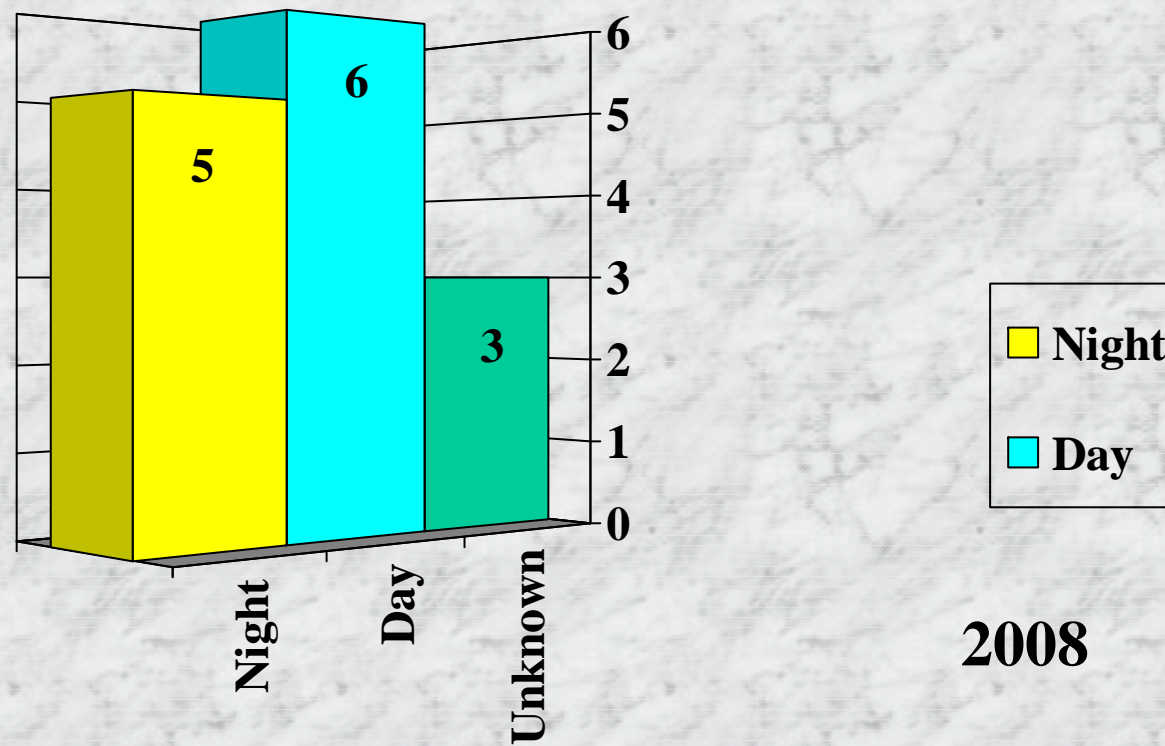
Fatalities - Occurred To



Injuries/Fatalities - Day Vs. Night

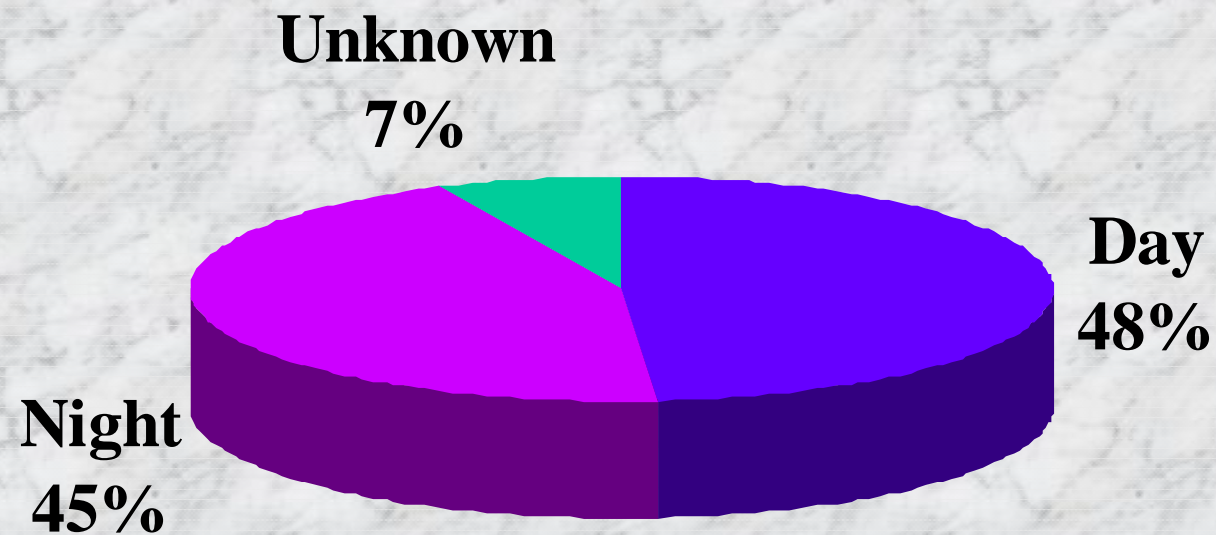


Fatalities - Day Vs. Night



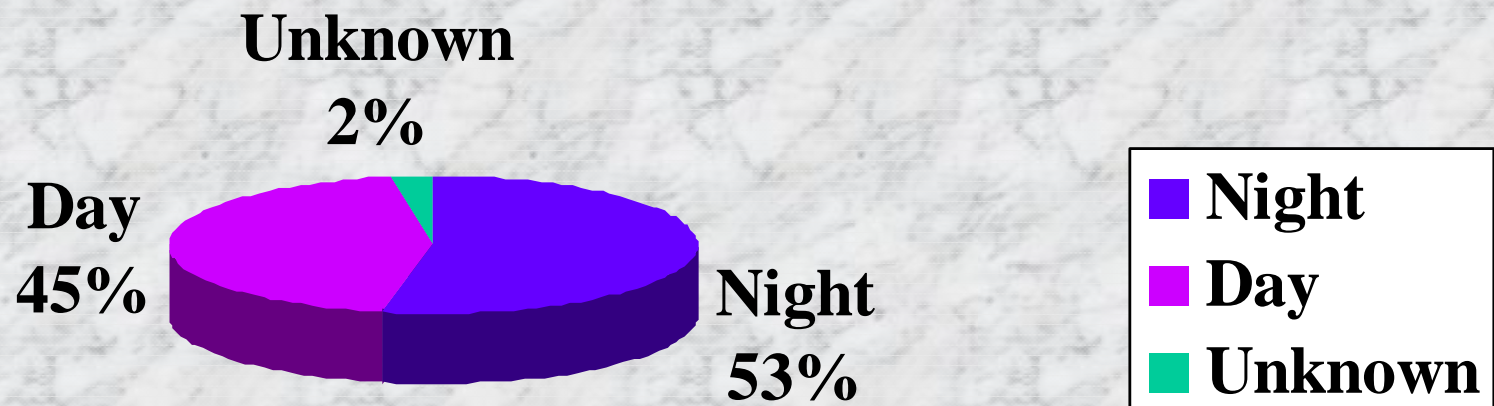
2008

Injuries/Fatalities - Day Vs. Night



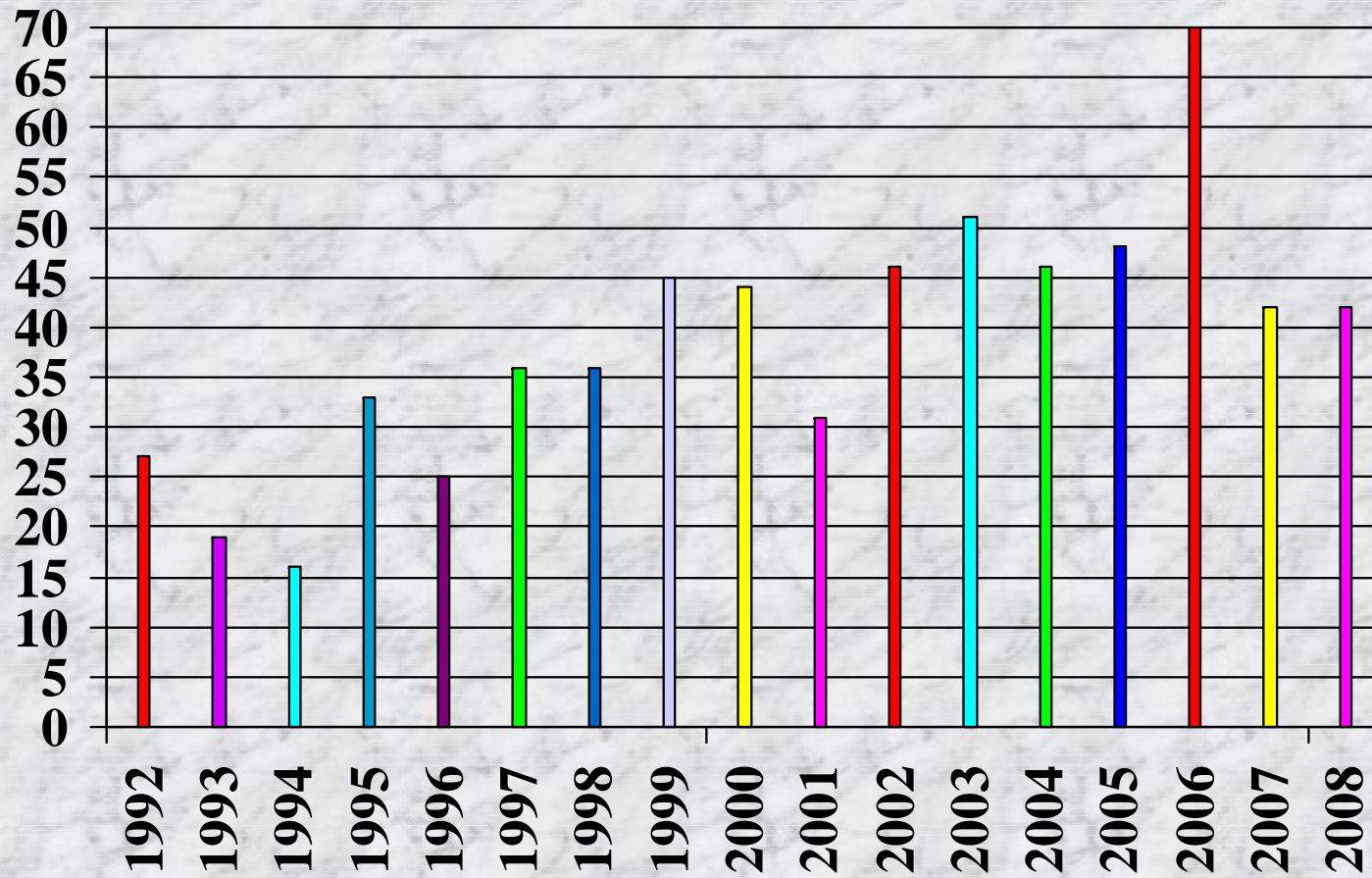
Injury/Fatality Total=656

Fatalities - Day Vs. Night

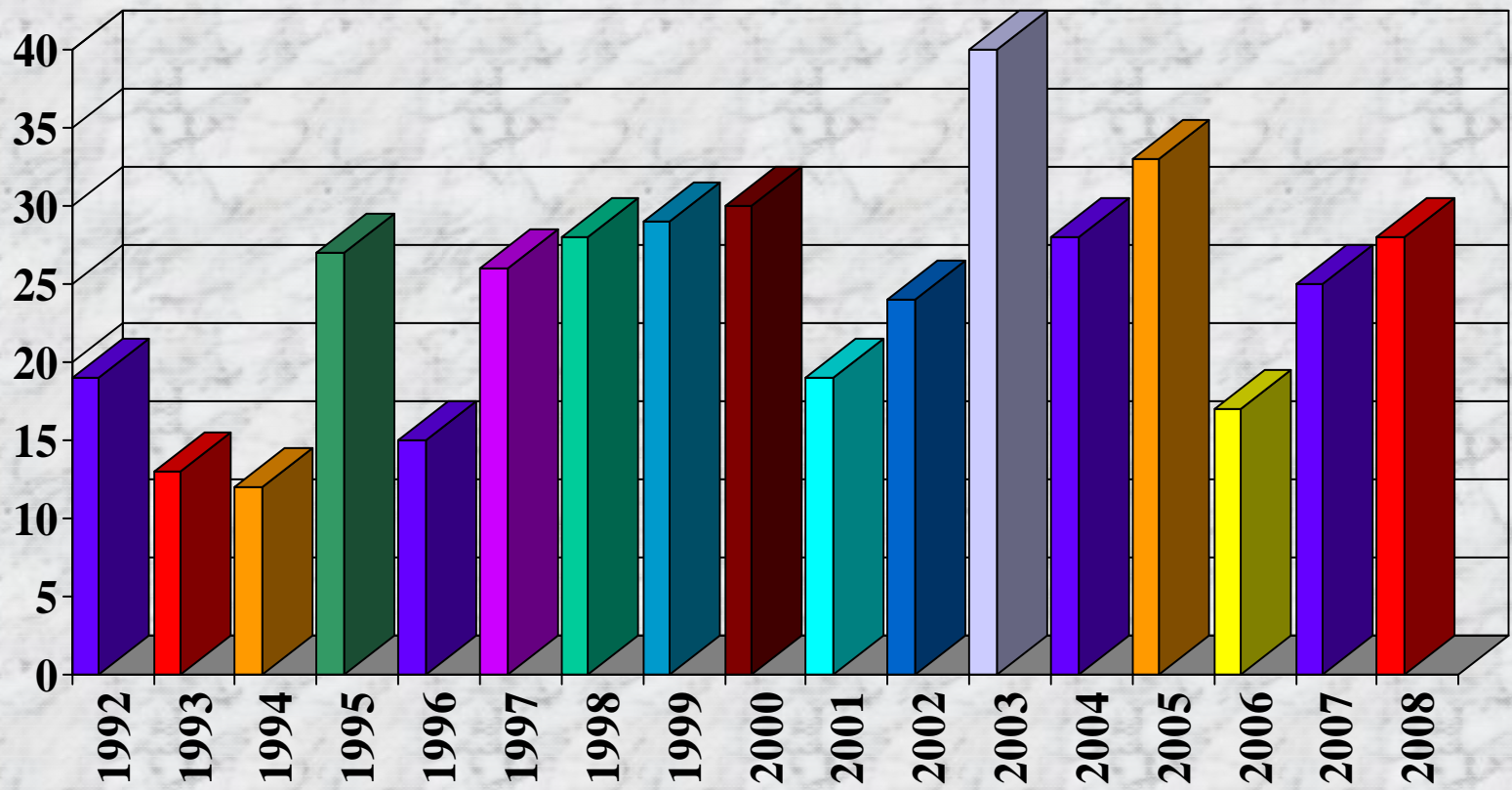


Fatality Total=204

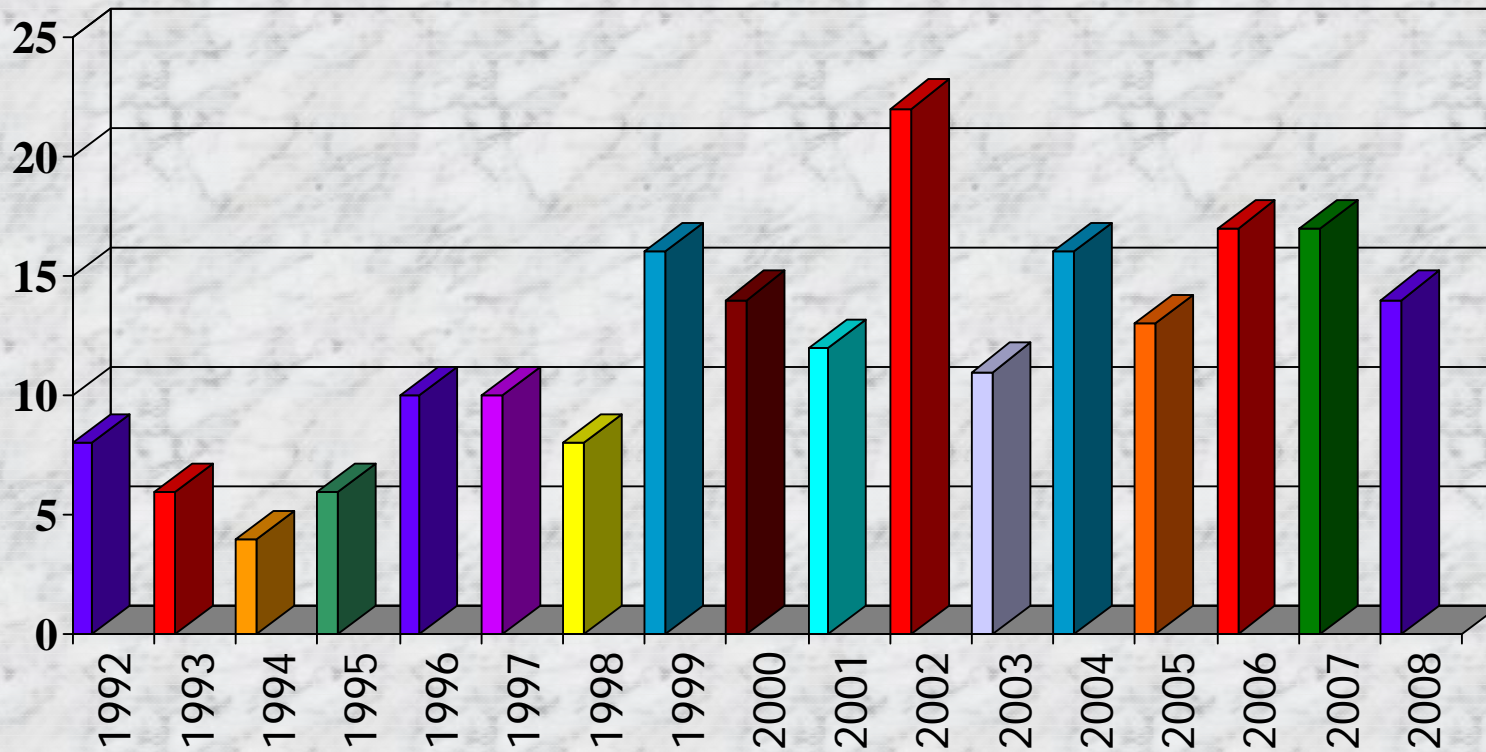
Injuries/Fatalities - Year



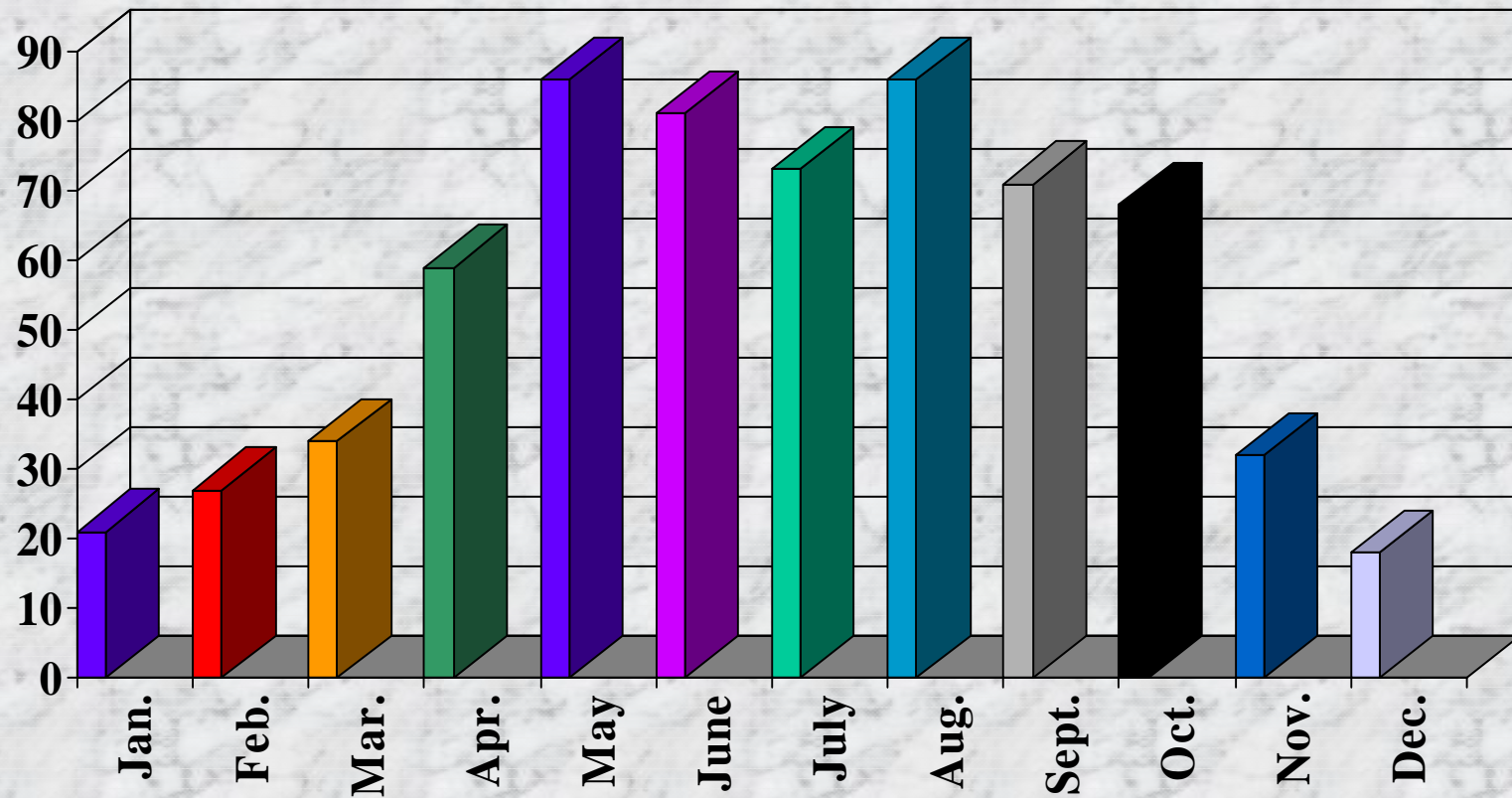
Injuries - Year



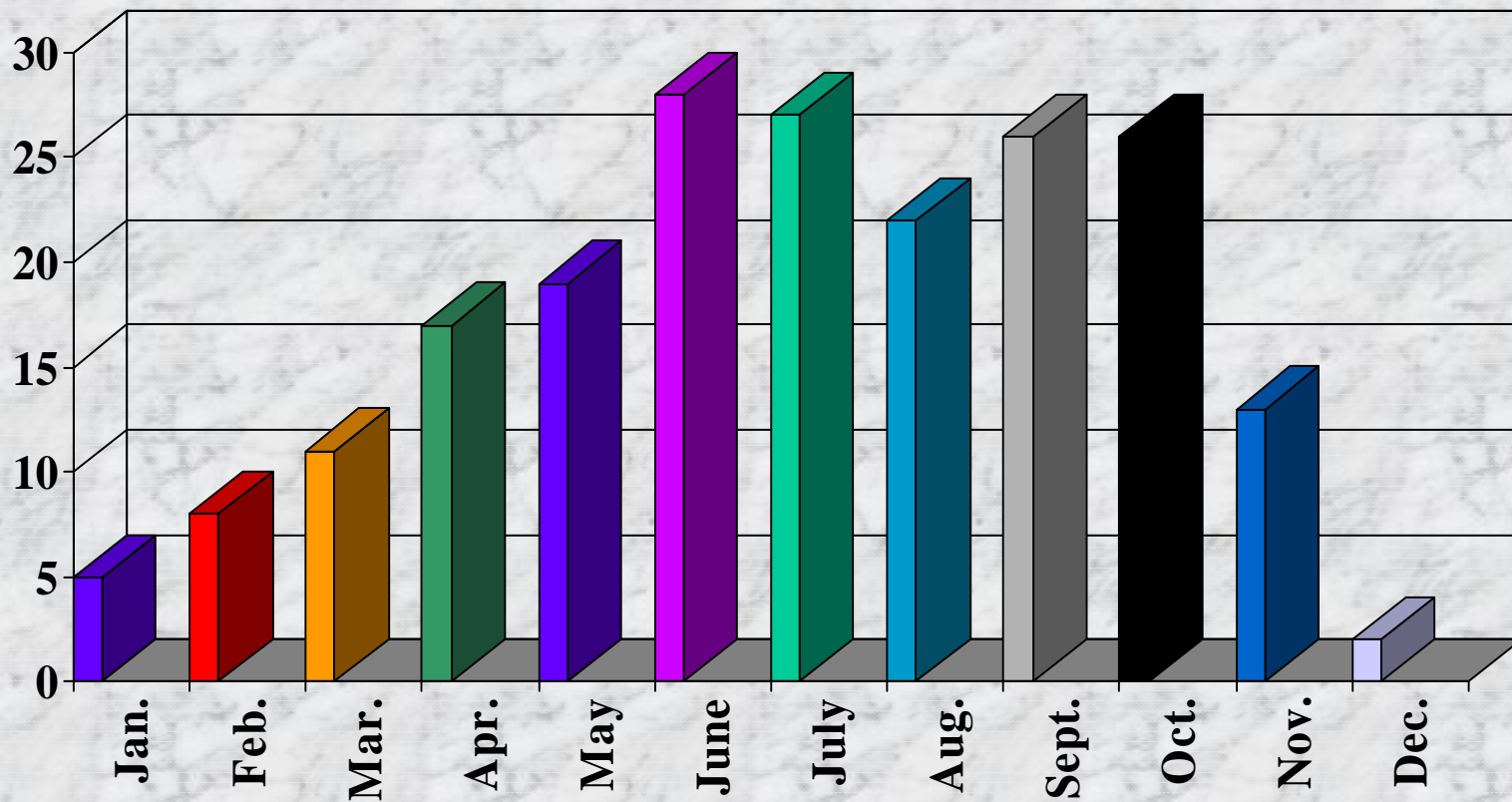
Fatalities - Year



Injuries/Fatalities - Month



Fatalities - Month



Injuries - Month

